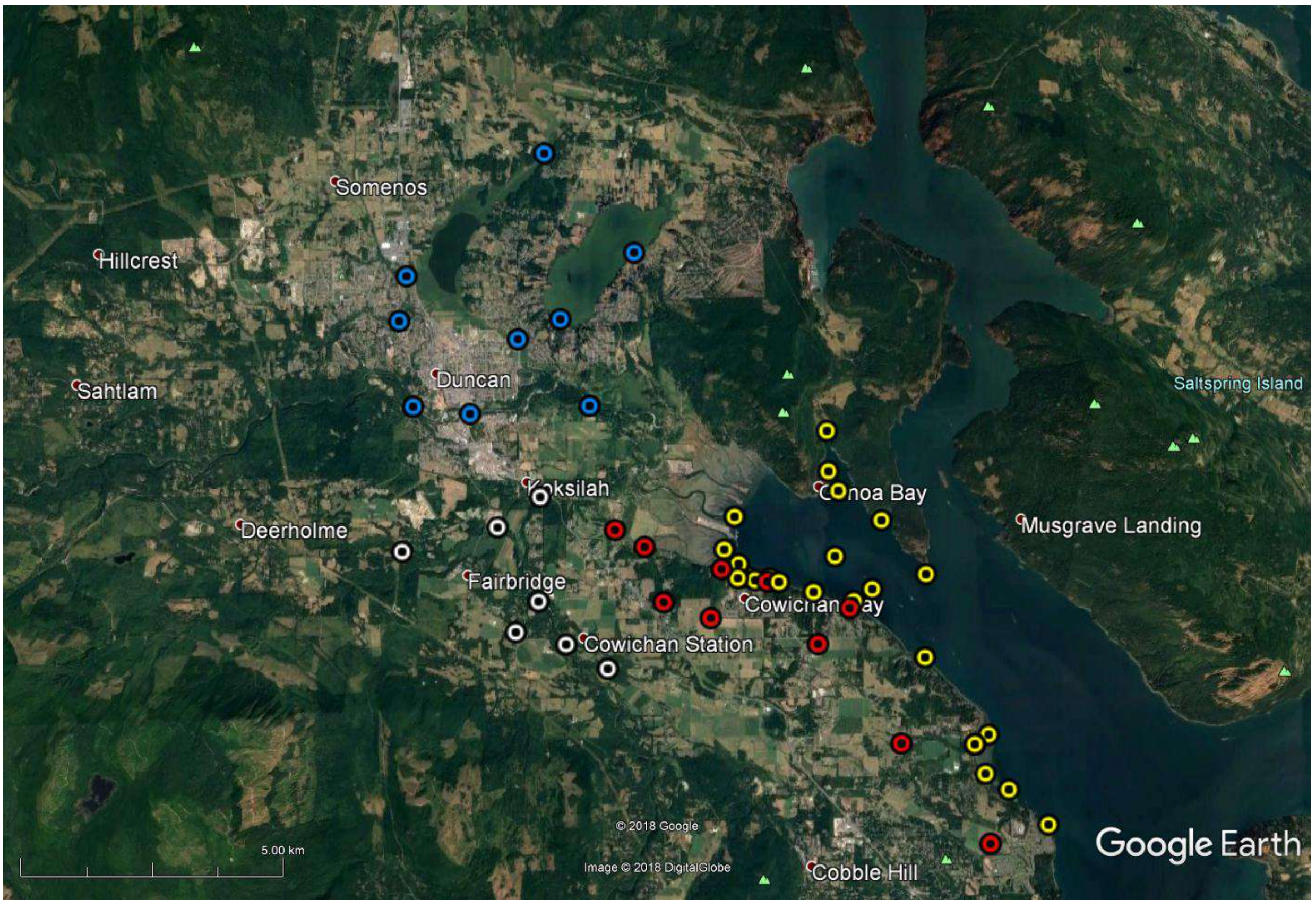


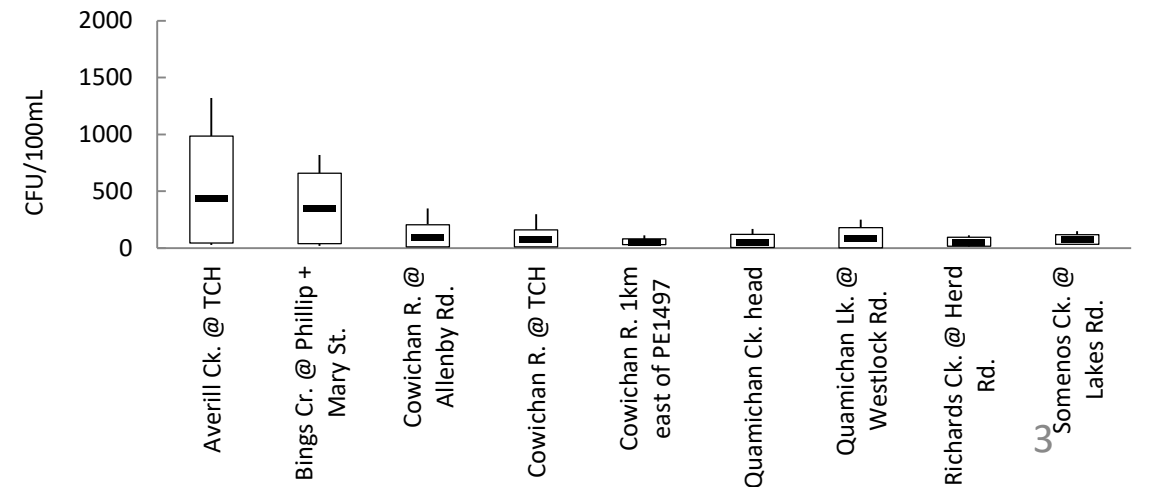
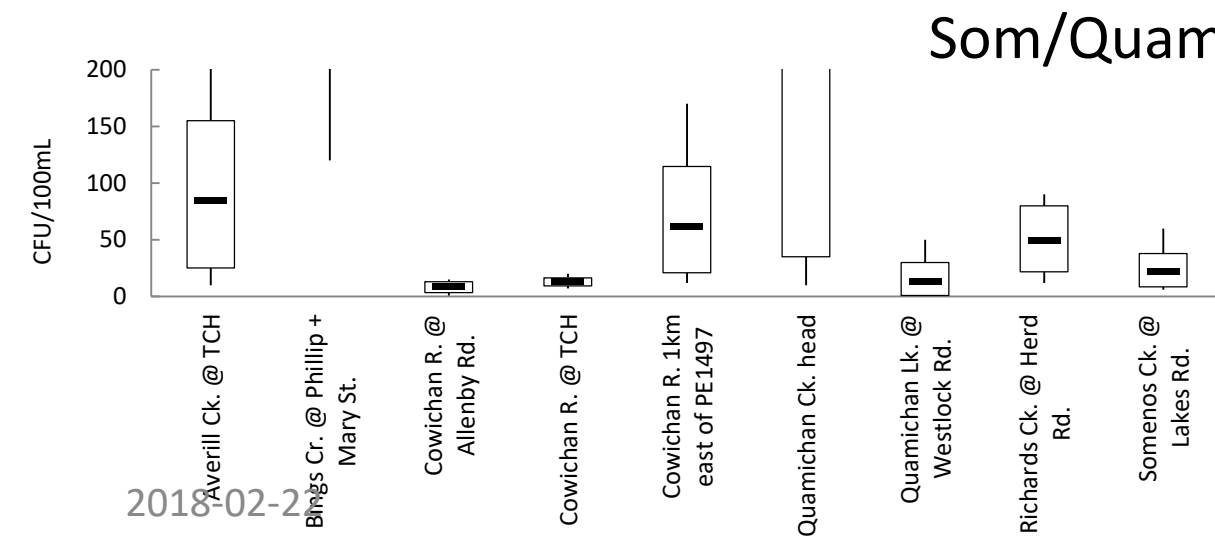
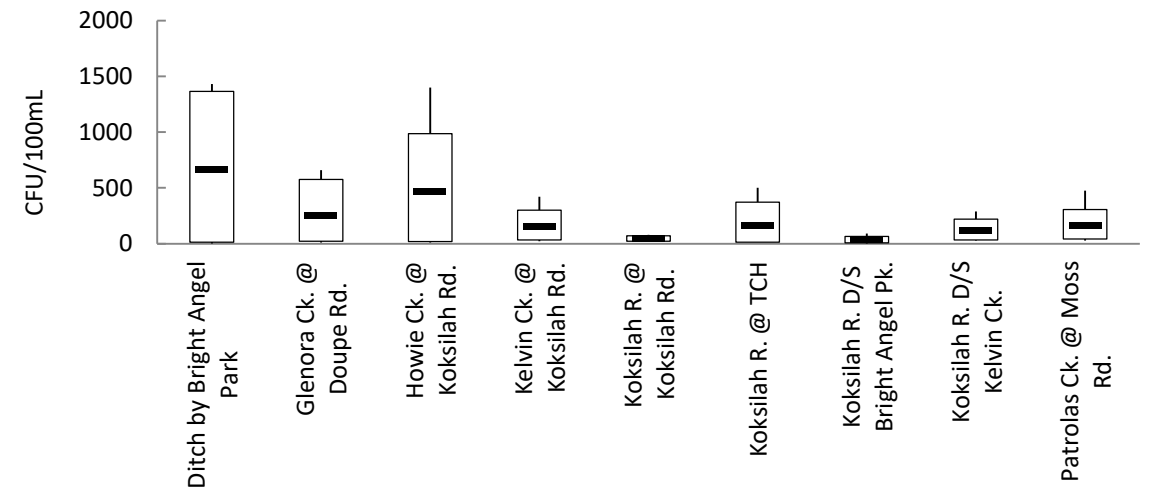
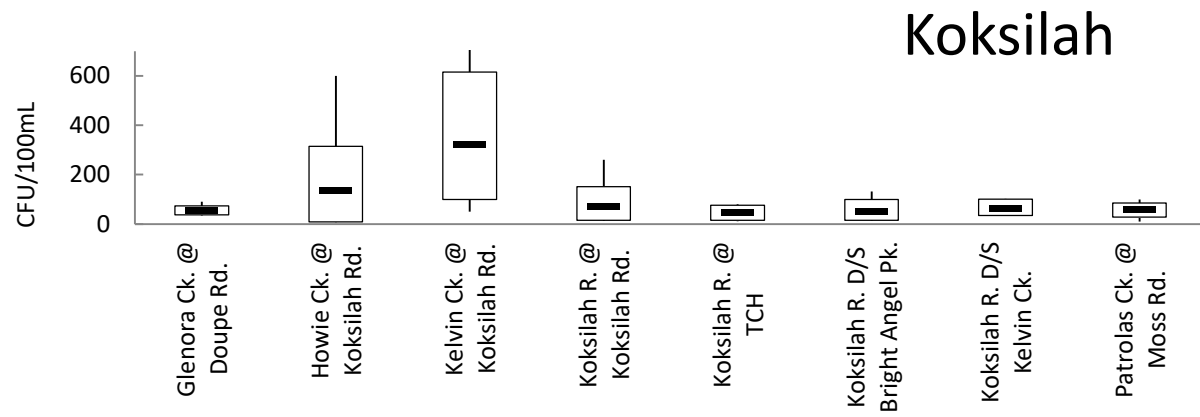
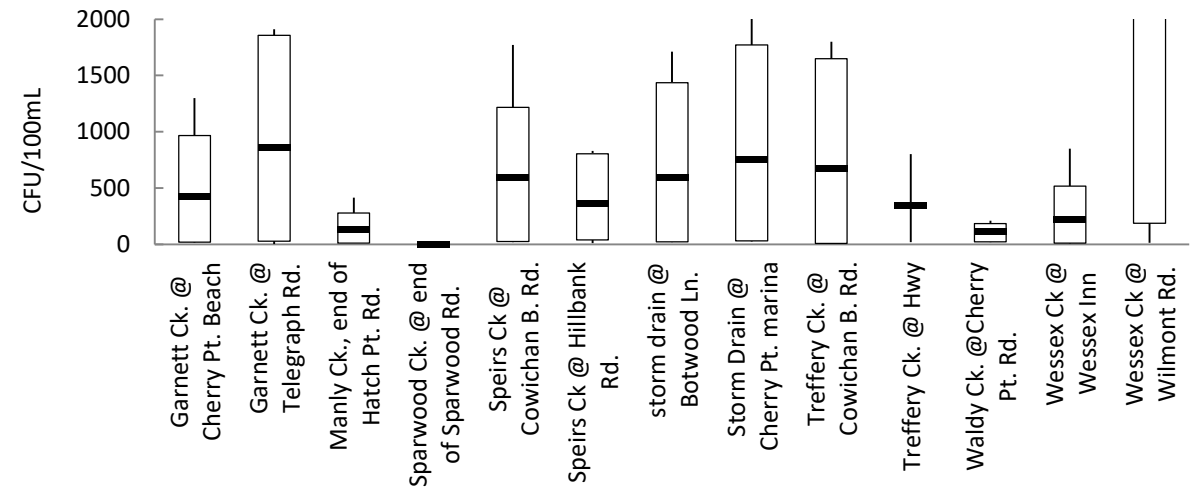
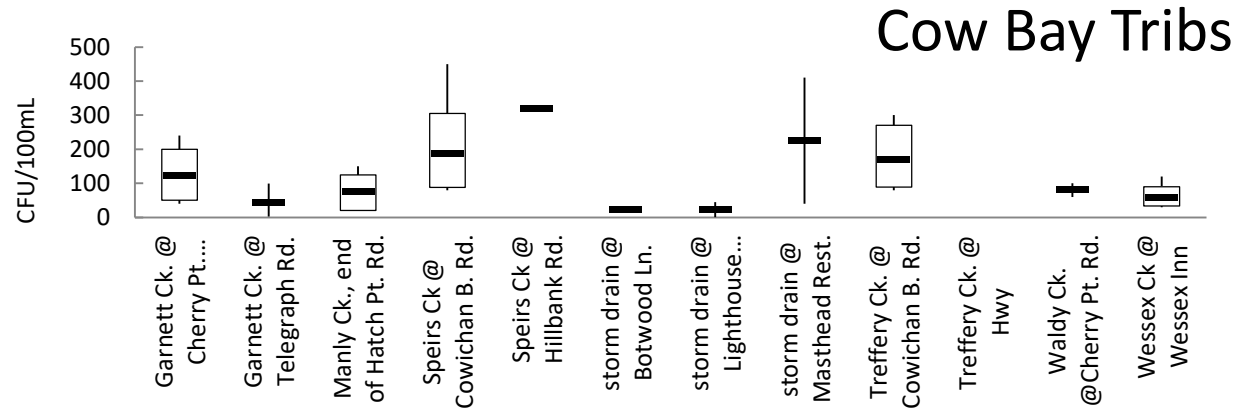
Cowichan Koksilah Water Quality Sampling 2017 ***VERY*** Preliminary Results

Dave Preikshot PhD, RPBio
Trophologic Aquatic Research
and
Somenos Marsh Conservation Society



Summer: E. coli

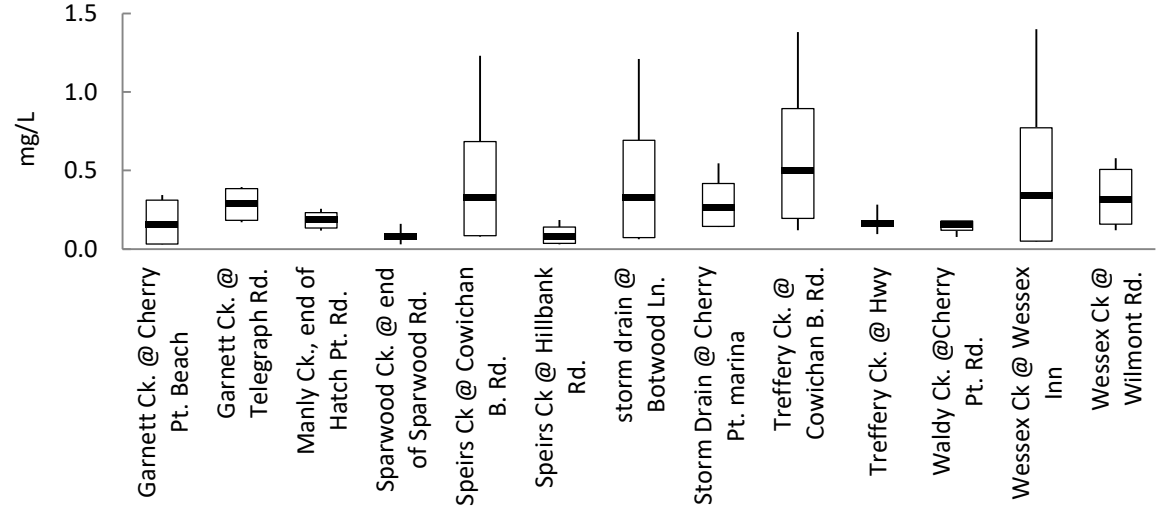
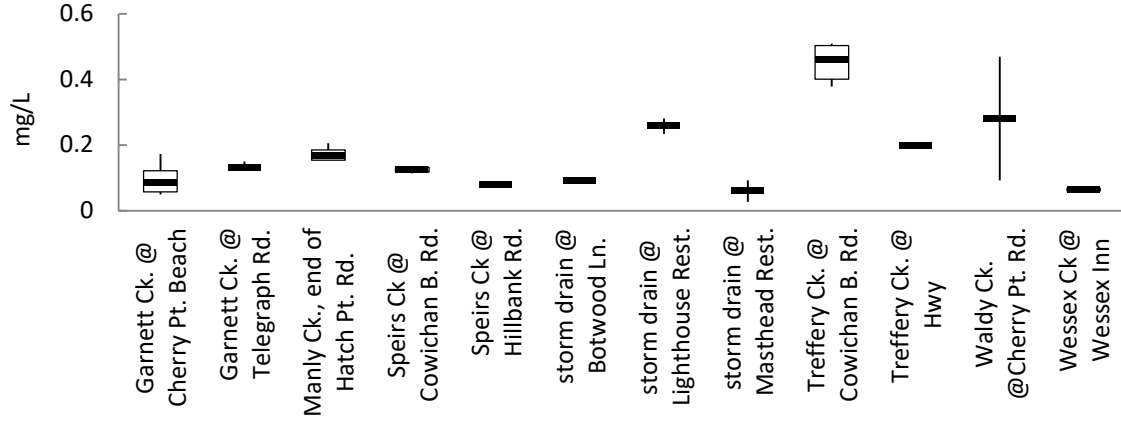
Winter: E. coli



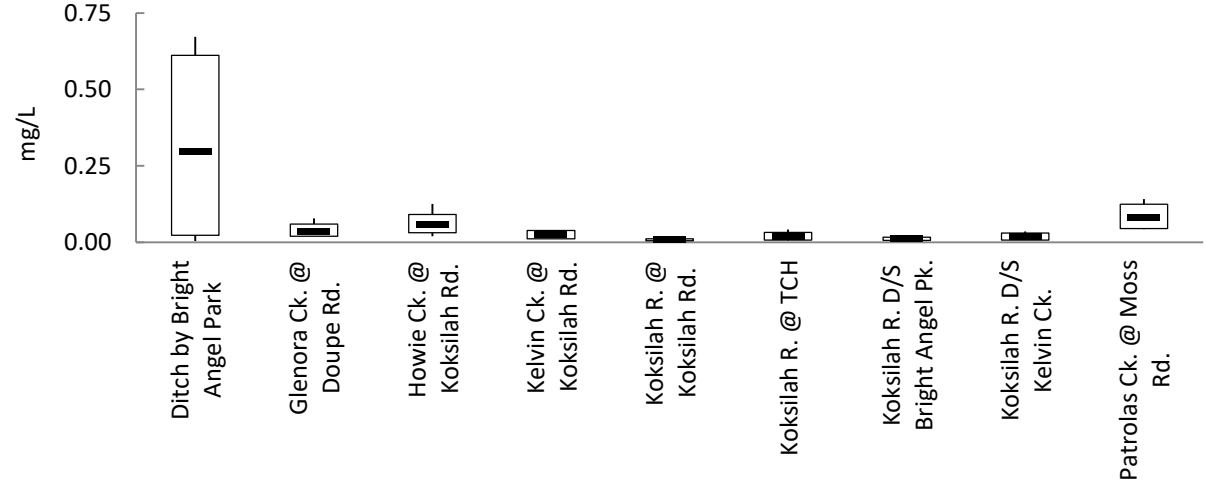
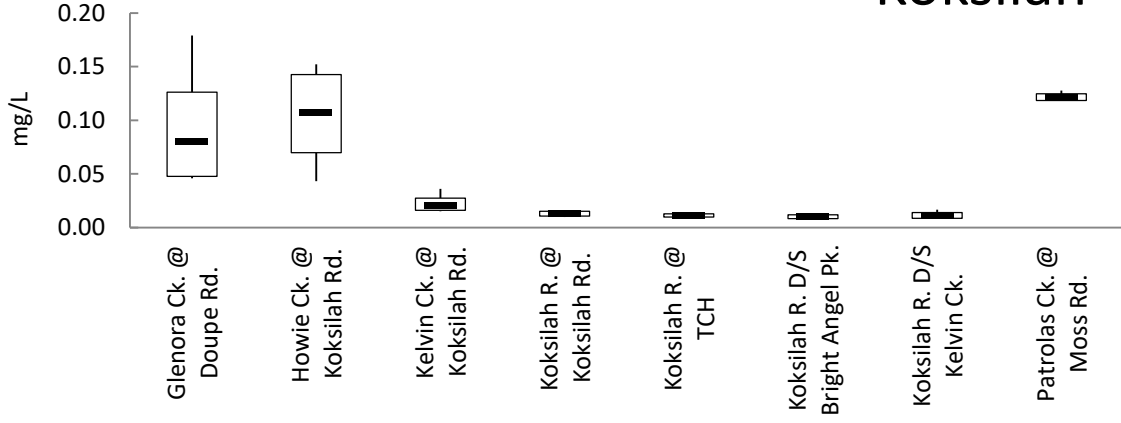
Summer: Phosphorous

Winter: Phosphorous

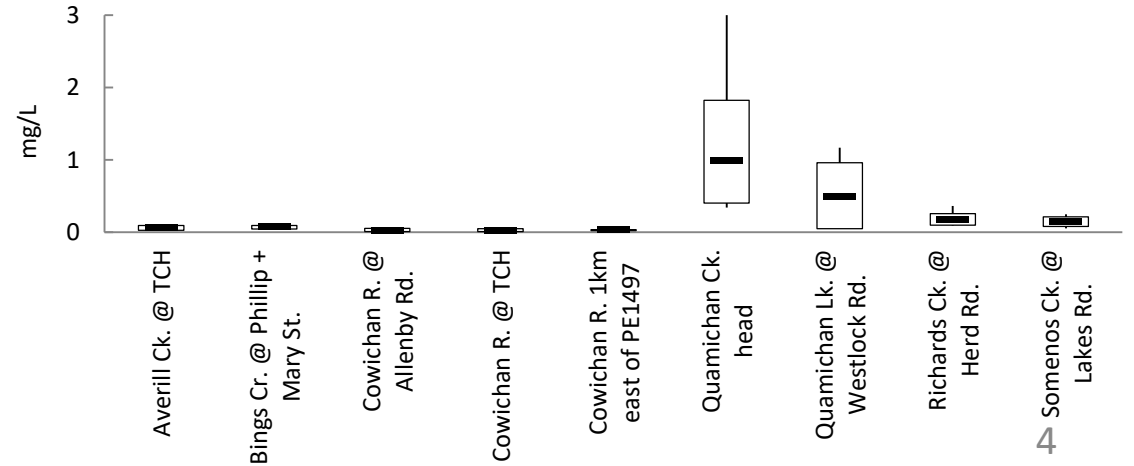
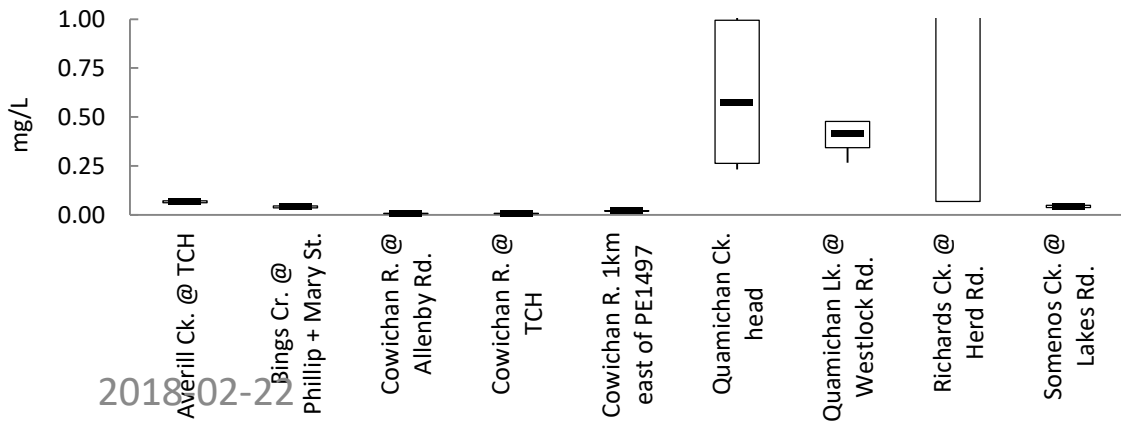
Cow Bay Tribs



Koksilah



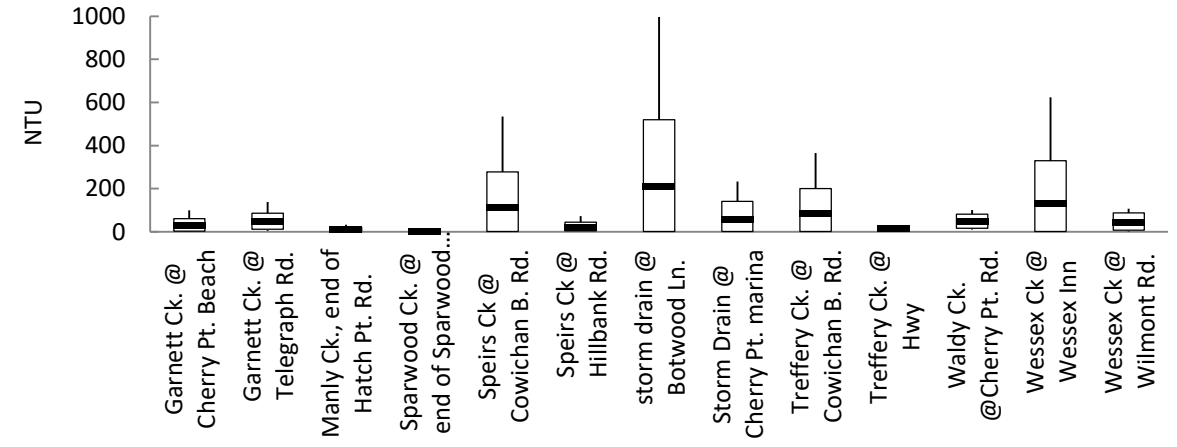
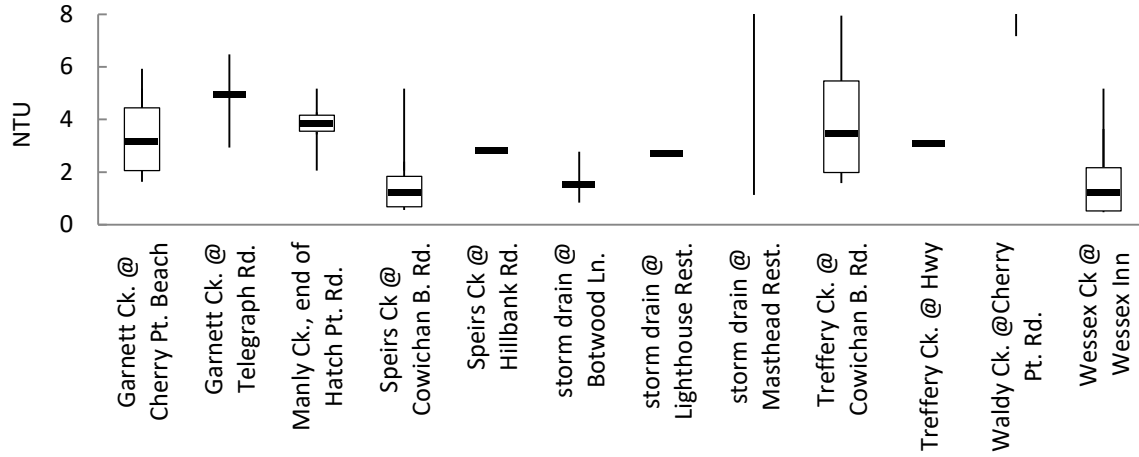
Som/Quam/Cow



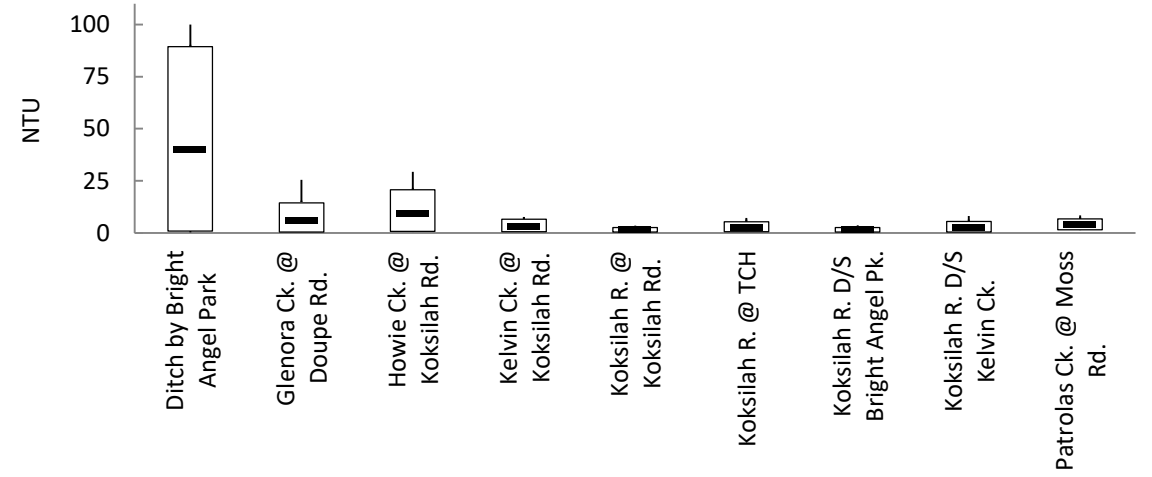
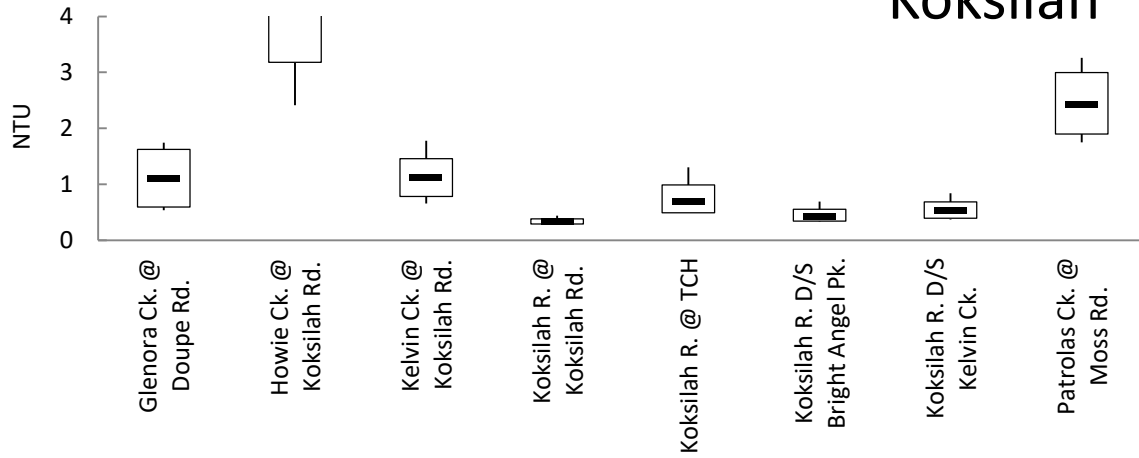
Summer: Turbidity

Winter: Turbidity

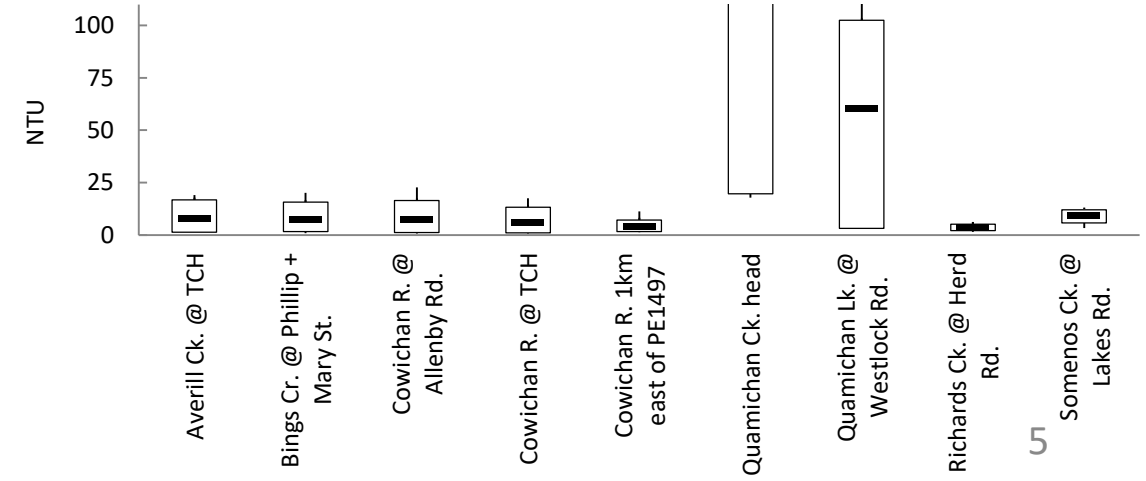
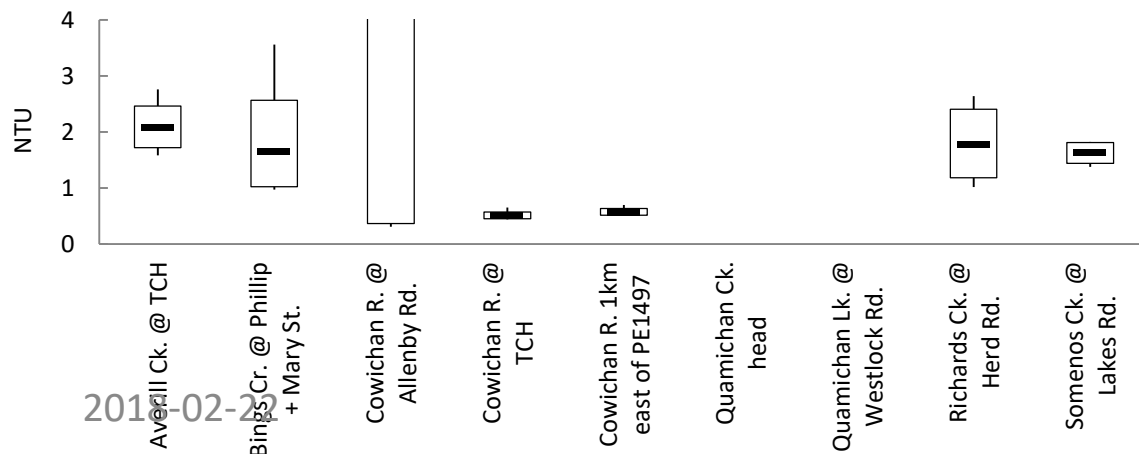
Cow Bay Tribs



Koksilah



Som/Quam/Cow



Water Quality Targets

E. coli	CFU/100mL	Turbidity	NTUs	Phosphorous	mg/L
1 ^o	77	low flow	2	mean	0.005
2 ^o	385	high flow	5	max	0.007

Summer Water Quality Goals

reg	loc	Average of Turbidity	Average of Phosphorous	Max of Phosphorous	Geomean of E. coli
SQLC	Averill Ck. @ TCH	1.990	0.066	0.071	50.441
SQLC	Bings Cr. @ Phillip + Mary St.	1.558	0.039	0.052	744.739
SQLC	Cowichan R. @ Allenby Rd.	8.572	0.007	0.009	6.607
SQLC	Cowichan R. @ TCH	0.500	0.007	0.008	11.742
SQLC	Cowichan R. 1km east of PE1497	0.566	0.020	0.022	41.955
SQLC	Quamichan Ck. head	156.798	0.574	1.590	118.534
SQLC	Quamichan Lk. @ Westlock Rd.	52.400	0.416	0.478	3.981
SQLC	Richards Ck. @ Herd Rd.	1.758	1.427	7.950	37.533
SQLC	Somenos Ck. @ Lakes Rd.	1.628	0.042	0.051	15.474
CBT	Garnett Ck. @ Cherry Pt. Beach	3.152	0.085	0.172	100.636
CBT	Manly Ck., end of Hatch Pt. Rd.	3.865	0.167	0.205	60.473
CBT	Speirs Ck @ Cowichan B. Rd.	1.230	0.126	0.136	197.681
CBT	Treffery Ck. @ Cowichan B. Rd.	3.313	0.465	0.509	203.000
CBT	Wessex Ck @ Wessex Inn	1.082	0.064	0.070	47.904
KR	Glenora Ck. @ Doupe Rd.	1.207	0.079	0.179	48.512
KR	Howie Ck. @ Koksilah Rd.	7.512	0.097	0.152	49.727
KR	Kelvin Ck. @ Koksilah Rd.	1.124	0.021	0.036	206.627
KR	Koksilah R. @ Koksilah Rd.	0.336	0.013	0.015	35.720
KR	Koksilah R. @ TCH	0.816	0.012	0.015	41.474
KR	Koksilah R. D/S Bright Angel Pk.	0.430	0.010	0.012	34.129
KR	Koksilah R. D/S Kelvin Ck.	0.522	0.011	0.017	54.588
KR	Patrolas Ck. @ Moss Rd.	2.558	0.122	0.130	46.648

Winter Water Quality Goals

reg	loc	Average of Turbidity	Average of Phosphorous	Max of Phosphorous	Geomean of E. coli
SQLC	Averill Ck. @ TCH	7.982	0.059	0.095	175.315
SQLC	Bings Cr. @ Phillip + Mary St.	8.080	0.077	0.099	194.218
SQLC	Cowichan R. @ Allenby Rd.	7.442	0.028	0.061	34.770
SQLC	Cowichan R. @ TCH	8.002	0.030	0.051	29.350
SQLC	Cowichan R. 1km east of PE1497	3.633	0.032	0.039	40.960
SQLC	Quamichan Ck. head	218.080	0.994	3.000	20.708
SQLC	Quamichan Lk. @ Westlock Rd.	68.815	0.604	1.280	18.267
SQLC	Richards Ck. @ Herd Rd.	3.712	0.162	0.364	30.890
SQLC	Somenos Ck. @ Lakes Rd.	9.162	0.144	0.250	65.151
CBT	Garnett Ck. @ Cherry Pt. Beach	27.560	0.156	0.345	131.494
CBT	Garnett Ck. @ Telegraph Rd.	44.772	0.290	0.395	178.697
CBT	Manly Ck., end of Hatch Pt. Rd.	14.202	0.198	0.259	77.138
CBT	Speirs Ck @ Cowichan B. Rd.	93.585	0.293	1.230	134.970
CBT	Speirs Ck @ Hillbank Rd.	21.388	0.081	0.185	137.890
CBT	storm drain @ Botwood Ln.	176.063	0.285	1.210	124.634
CBT	Storm Drain @ Cherry Pt. marina	58.170	0.266	0.546	208.183
CBT	Treffery Ck. @ Cowichan B. Rd.	81.908	0.500	1.380	95.873
CBT	Waldy Ck. @Cherry Pt. Rd.	47.200	0.155	0.180	71.859
CBT	Wessex Ck @ Wessex Inn	116.052	0.307	1.400	67.809
KR	Glenora Ck. @ Doupe Rd.	6.152	0.037	0.078	91.975
KR	Howie Ck. @ Koksilah Rd.	9.745	0.058	0.126	171.153
KR	Koksilah R. @ Koksilah Rd.	1.596	0.009	0.014	36.194
KR	Koksilah R. @ TCH	2.674	0.019	0.042	59.128
KR	Koksilah R. D/S Bright Angel Pk.	1.290	0.010	0.023	19.241
KR	Koksilah R. D/S Kelvin Ck.	2.646	0.019	0.036	80.573
KR	Patrolas Ck. @ Moss Rd.	4.058	0.084	0.142	123.080

